

AXIS P5676-LE PTZ Camera

High-performance 4 MP PTZ with IR

This high-performance PTZ camera offers 4 MP image quality with 30x optical zoom and IR. Forensic WDR and Lightfinder 2.0 guarantee images with saturated colors and sharp details of moving objects even in challenging light or near darkness. It offers support for analytics and includes AXIS Object Analytics to detect and classify people and vehicles. This cost-effective camera includes built-in cybersecurity features to safeguard your system and prevent unauthorized access. Axis Zipstream with H.264/H.265 significantly lowers bandwidth and storage requirements. Furthermore, you can pop it into an AXIS Q6100-E using AXIS TP6902-E Adapter Bracket and enjoy 360° overview for total situational awareness.

- > [4 MP with 30x optical zoom](#)
- > [Forensic WDR, Lightfinder 2.0, IR Illumination](#)
- > [Support for advanced analytics](#)
- > [Built-in cybersecurity features](#)
- > [Zipstream with support for H.264/H.265](#)



AXIS P5676-LE PTZ Camera

Models	AXIS P5676-LE 50 Hz AXIS P5676-LE 60 Hz	System integration	
Camera		Application Programming Interface	Open API for software integration, including VAPIX®, metadata and AXIS Camera Application Platform (ACAP); specifications at axis.com/developer-community . ACAP includes Native SDK . One-click cloud connection ONVIF® Profile G, ONVIF® Profile M, ONVIF® Profile S, and ONVIF® Profile T, specifications at onvif.org
Image sensor	1/2.9" progressive scan RGB CMOS	Event conditions	Audio: audio clip playing, audio detection Device status: above operating temperature, above or below operating temperature, below operating temperature, fan failure, IP address removed, network lost, new IP address, PTZ power failure, storage failure, system ready, within operating temperature Edge storage: recording ongoing, storage disruption, storage health issues detected I/O: digital input, manual trigger, virtual input MQTT: subscribe PTZ: PTZ malfunctioning, PTZ movement, PTZ preset position reached, PTZ ready Scheduled and recurring: schedule Video: average bitrate degradation, day-night mode, live stream open, tampering
Lens	Varifocal, 4.5-135 mm, F1.6 - 4.6 Horizontal field of view: 57.1°- 2.1° Vertical field of view: 34.4°- 1.2° Minimum focus distance: 1.3 m (4.3 ft) P-Iris control	Event actions	Audio clips: play, stop Day-night mode Guard tour I/O: toggle I/O once, toggle I/O while the rule is active IR illumination: turn on, use lights while the rule is active MQTT: publish Notification: HTTP, HTTPS, TCP and email Overlay text Preset positions PTZ Autotracking: start temporary detection, toggle, toggle profile Recordings: SD card and network share SNMP trap messages: send, send while the rule is active Upload of images or video clips: FTP, SFTP, HTTP, HTTPS, network share and email WDR mode
Day and night	Automatically removable infrared-cut filter	Built-in installation aids	Pixel counter, leveling guide
Minimum illumination	Color: 0.1 lux at 30 IRE F1.6 B/W: 0.01 lux at 30 IRE F1.6 0 lux with IR illumination on Color: 0.11 lux at 50 IRE F1.6 B/W: 0.03 lux at 50 IRE F1.6 0 lux with IR illumination on	Analytics	
Shutter speed	1/50000 s to 1/5 s with 50 Hz 1/62500 s to 1/5 s with 60 Hz	AXIS Object Analytics	Object classes: humans, vehicles Features: line crossing, object in area, crossline counting ^{BETA} , time in area ^{BETA} Up to 10 scenarios Metadata visualized with trajectories, color-coded bounding boxes and tables Polygon include/exclude areas Perspective configuration ONVIF Motion Alarm event
Pan/Tilt/Zoom	Pan: 360° endless, 0.1°- 350°/s Tilt: 0-90°, 0.1°- 350°/s Zoom: 30x optical, 12x digital, Total 360x zoom 256 preset positions, nadir flip, limited guard tour, control queue, on-screen directional indicator, set new pan 0°, focus recall, spot focus	Metadata	Object data: Classes: humans, faces, vehicles, license plates Confidence, position Event data: Producer reference, scenarios, trigger conditions
System on chip (SoC)		Applications	Included AXIS Object Analytics AXIS Video Motion Detection Audio detection, active gatekeeper Autotracker 2 Support for AXIS Camera Application Platform enabling installation of third-party applications, see axis.com/acap
Model	ARTPEC-7	Cybersecurity	
Memory	1024 MB RAM, 512 MB Flash	Edge security	Software: Signed firmware, brute force delay protection, digest authentication, password protection, AES-XTS-Plain64 256bit SD card encryption Hardware: Axis Edge Vault cybersecurity platform Secure element (CC EAL 6+), Axis device ID, secure keystore, signed video, secure boot
Compute capabilities	Machine learning processing unit (MLPU)	Network security	IEEE 802.1X (EAP-TLS) ^a , IEEE 802.1AR, HTTPS/HSTS ^a , TLS v1.2/v1.3 ^a , Network Time Security (NTS), X.509 Certificate PKI, IP address filtering
Video		Documentation	<i>AXIS OS Hardening Guide</i> <i>Axis Vulnerability Management Policy</i> <i>Axis Security Development Model</i> AXIS OS Software Bill of Material (SBOM)
Video compression	H.264 (MPEG-4 Part 10/AVC) Baseline, Main and High Profiles H.265 (MPEG-H Part 2/HEVC) Main Profile Motion JPEG		
Resolution	(16:9) 2688x1512 to 320x180		
Frame rate	Up to 60/50 fps (60/50 Hz) in all resolutions		
Video streaming	Multiple, individually configurable streams in H.264, H.265 and Motion JPEG Controllable frame rate and bandwidth Axis Zipstream technology in H.264 and H.265 VBR/ABR/MBR H.264/H.265 Low latency mode Video streaming indicator		
Image settings	Compression, saturation, brightness, sharpness, contrast, local contrast, white balance, exposure control, exposure zones, Forensic WDR: Up to 120 dB depending on scene, defogging, day/night shift level, tone mapping, fine tuning of low-light behavior, rotation: 0°, 180°, text and image overlay, image freeze on PTZ, electronic image stabilization, barrel distortion correction, 20 individual polygon and mosaic privacy masks, orientation aid PTZ, target aperture Scene profiles: forensic, indoor, outdoor, traffic overview		
Audio			
Audio streaming	Two-way audio via network speaker pairing		
Audio encoding	24bit LPCM, AAC-LC 8/16/32/48 kHz, G.711 PCM 8 kHz, G.726 ADPCM 8 kHz, Opus 8/16/48 kHz Configurable bit rate		
Audio input/output	External microphone input or line input, line output (Requires Axis 10-pin Push-pull System Connector or Axis Multicable C I/O Audio Power 1 m/5 m, not included), automatic gain control		
Network			
Security	IP address filtering, HTTPS ^a encryption, IEEE 802.1x (EAP-TLS) ^a network access control, user access log, centralized certificate management		
Network protocols	IPv4, IPv6 USGv6, ICMPv4/ICMPv6, HTTP, HTTPS ^a , HTTP/2, TLS ^a , QoS Layer 3 DiffServ, FTP, SFTP, CIFS/SMB, SMTP, mDNS (Bonjour), UPnP [®] , SNMP v1/v2c/v3 (MIB-II), DNS/DNSv6, DDNS, NTP, RTSP, RTCP, RTP, SRTP/RTSPS, TCP, UDP, IGMPv1/v2/v3, DHCPv4/v6, ARP, SSH, NTCIP, LLDP, CDP, MQTT v3.1.1, Secure syslog (RFC 3164/5424, UDP/TCP/TLS), Link-Local address (ZeroConf)		

To download documents, go to axis.com/support/cybersecurity/resources

To read more about Axis cybersecurity support, go to axis.com/cybersecurity

Safety

IEC/EN/UL 62368-1 ed. 3, CAN/CSA C22.2 No. 62368-1 ed. 3, IEC 62471 risk group 2

Environment

IEC 60068-2-1, IEC 60068-2-2, IEC 60068-2-6, IEC 60068-2-14, IEC 60068-2-27, IEC 60068-2-78, IEC/EN 60529 IP66, IEC/EN 62262 IK10, NEMA 250 Type 4X, NEMA TS 2 (2.2.7-2.2.9), ISO 21207 (Method B)

Network

NIST SP500-267

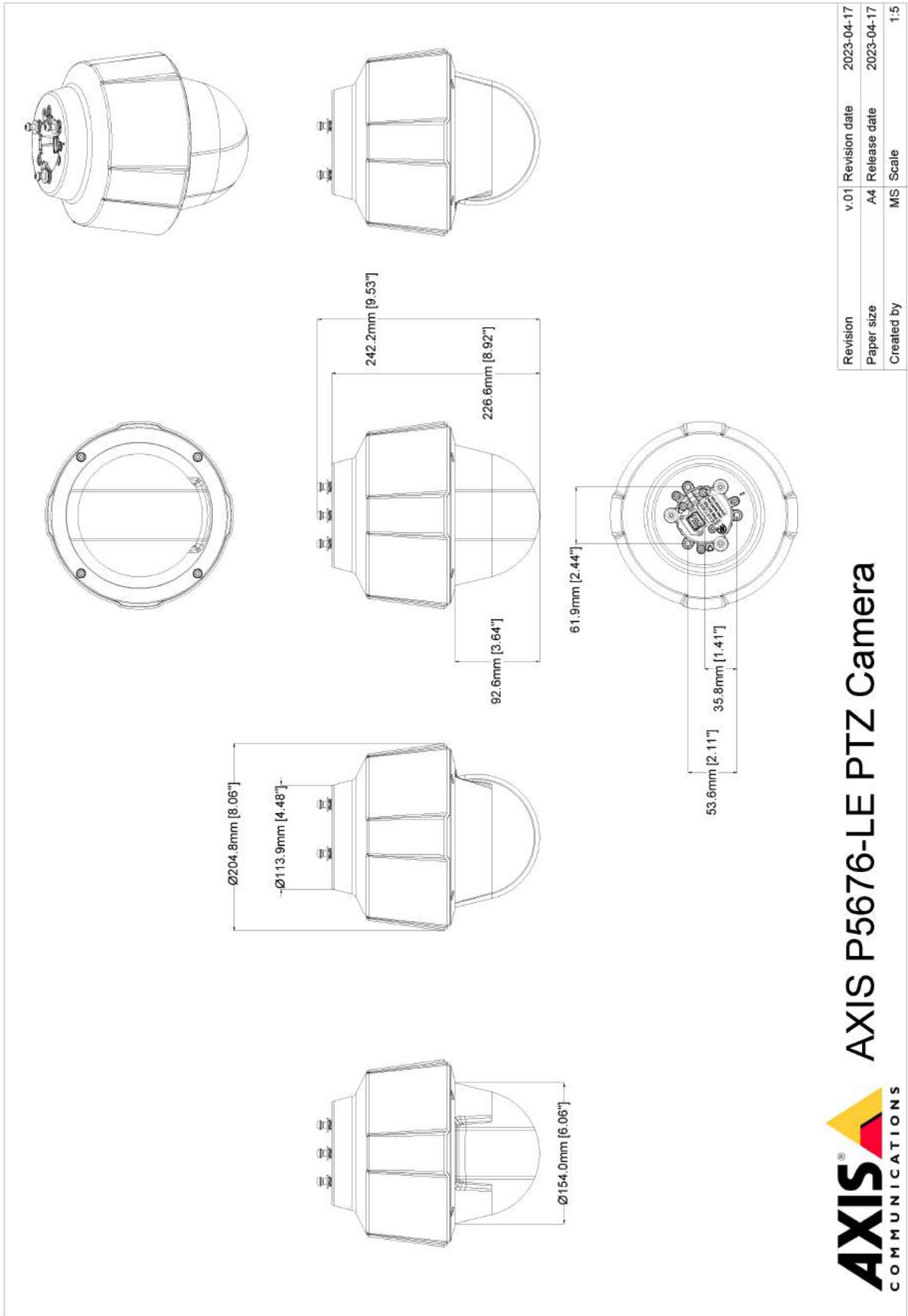
General	
Casing	IP66-, NEMA 4X- and IK10-rated Polycarbonate (PC) casing Color: white NCS S 1002-B, repaintable skin cover For repainting instructions of casing and impact on warranty, contact your Axis partner.
Power	Camera consumption: typical 13 W (no IR), max 25.5 W IEEE 802.3at Type 2 Class 4 Camera consumption: typical 13 W (no IR), max 29 W IEEE 802.3bt Type 3 Class 6 Multiconnector: 20–28 V DC, typical 13 W, max 30 W 20–24 V AC, typical 20 VA, max 43 VA (High PoE midspan or power supply not included)
Connectors	RJ45 10BASE-T/100BASE-TX PoE RJ45 push-pull connector (IP66) included With Axis 10-pin push-pull system connector or Axis multicable C I/O audio power 1 m/5 m (not included): I/O connector for DC or AC input, 4 configurable alarm Inputs/outputs: mic in/line in, line out
IR illumination	Optimized IR with power-efficient, long-life 850 nm IR LEDs With 30 W midspan: Range of reach 200 m (656 ft) or more depending on the scene. The range is temporarily reduced during PTZ movements.
Storage	Support for SD/SDHC/SDXC card Support for SD card encryption (AES-XTS-Plain64 256bit) Recording to network-attached storage (NAS) For SD card and NAS recommendations see axis.com
Operating conditions	-30 °C to 50 °C (-22 °F to 122 °F) Maximum temperature according to NEMA TS 2 (2.2.7): 74 °C (165 °F) Start-up temperature: -30 °C Humidity 10–100% RH (condensing)
Storage conditions	-40 °C to 65 °C (-40 °F to 149 °F) Humidity 5–95% RH (non-condensing)
Approvals	EMC CISPR 35, CISPR 32 Class A, EN 55032 Class A, EN 55035, EN 50121-4, EN 61000-3-2, EN 61000-3-3, EN 61000-6-1, EN 61000-6-2 Canada: ICES-3(A)/NMB-3(A) Japan: VCCI Class A Korea: KS C 9835, KS C 9832 Class A USA: FCC Part 15 Subpart B Class A

Dimensions	Height: 242 mm (9.53 in) ø 205 mm (8.1 in)
Weight	2.5 kg (5.5 lb)
Included accessories	RJ45 Push-pull plug (IP66), installation guide, Windows® decoder 1-user license
Optional accessories	AXIS TP6902-E Adapter Bracket, AXIS T91B mounts, AXIS T8154 60 W SFP Midspan, outdoor RJ45 cable, Axis 10-pin Push-Pull System Connector, Axis Multicable C I/O Audio Power 1 m/5 m For more accessories, see axis.com
Video management software	AXIS Companion, AXIS Camera Station, video management software from Axis Application Development Partners available at axis.com/vms
Languages	English, German, French, Spanish, Italian, Russian, Simplified Chinese, Japanese, Korean, Portuguese, Traditional Chinese, Dutch, Czech, Swedish, Finnish, Turkish, Thai, Vietnamese
Warranty	5-year warranty, see axis.com/warranty

Sustainability	
Substance control	PVC free RoHS in accordance with EU RoHS Directive 2011/65/EU/ and EN 63000:2018 REACH in accordance with (EC) No 1907/2006. For SCIP UUID, see echa.europa.eu
Materials	Renewable carbon-based plastic content: 22% (recycled) Screened for conflict minerals in accordance with OECD guidelines To read more about sustainability at Axis, go to axis.com/about-axis/sustainability
Environmental responsibility	axis.com/environmental-responsibility Axis Communications is a signatory of the UN Global Compact, read more at unglobalcompact.org

- a. *This product includes software developed by the OpenSSL Project for use in the OpenSSL Toolkit. (openssl.org), and cryptographic software written by Eric Young (eay@cryptsoft.com).*

Dimension drawing



AXIS P5676-LE PTZ Camera



www.axis.com

